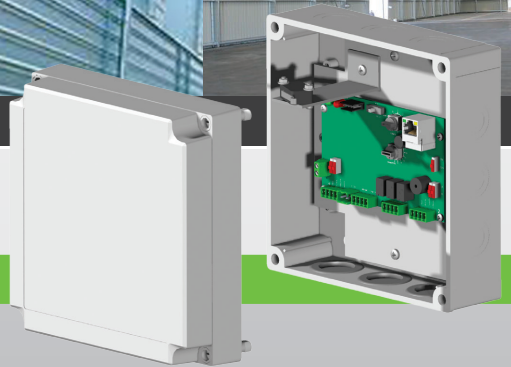




Perimeter Detection Systems

# G-WALL

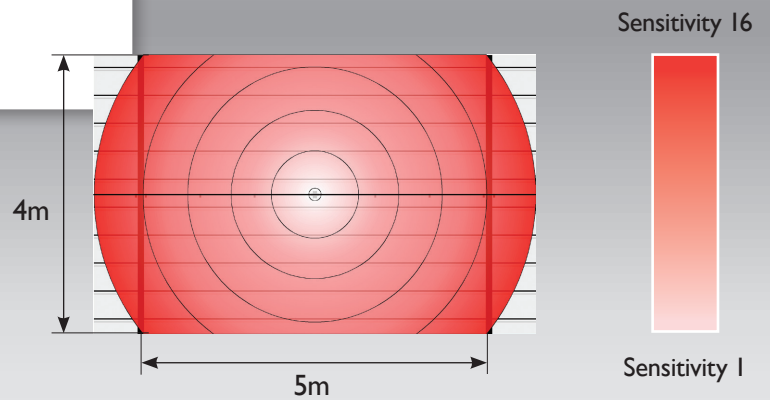
Wall-mounted Shock Detection Cable



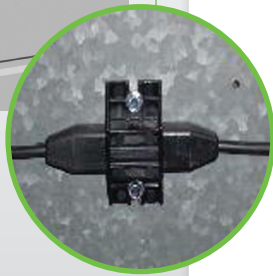
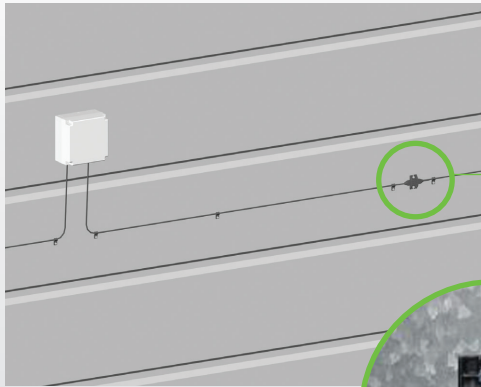
## Detection Reliability

G-Wall is a wall-mounted shock detection cable that detects hammering, cutting and ramraiding intrusion attempts on a wide range of different surfaces including concrete, brick and metal-sheet cladding.

G-Wall is designed to protect warehouses and commercial buildings and will detect an intrusion attempt before entry inside the building that is under protection.



The detection zone rises with the sensitivity



## Easy Installation and Modularity

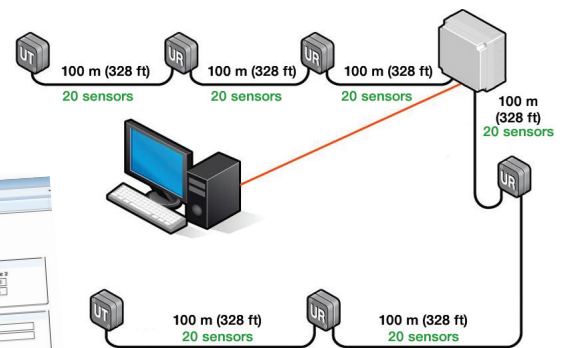
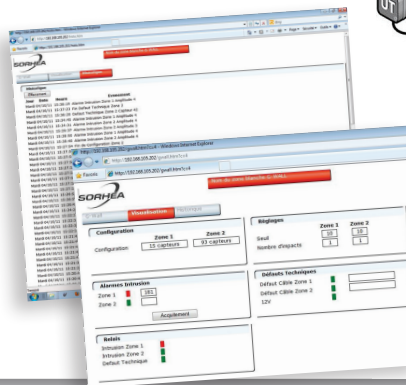
G-Wall is composed of a Control Unit that can manage up to 600m of detection cable and 2 zones of detection (1 per direction).

Sensors using the accelerometer technology are pre-cabled along the detector cable and provide a detection range of 5m in height and 5m in width. Each sensor can have its own sensitivity setting to allow for greater flexibility when there are different surfaces within the same building.

Automatic calibration of the sensors allows for rapid installation and the sensitivity can be adjusted on a scale from 1-16 according to the requirements of the site. The sensors are fixed directly onto the wall every 5m using brackets.

## Maintenance and Configuration at Distance

Maintenance and configuration of the sensitivity settings at distance is possible thanks to the integrated web server of the Control Unit. It is possible to have real time access to the control inputs and outputs as well as the last 1000 events.



### Technical Specification

<b>Power supply</b>	12V DC
<b>Alarm information</b>	Intrusion (per cable) Technical default (cable cut, power default) Tamper protection
<b>Operating temperature</b>	from -35°C (-31°F) up to +70°C (+158°F)
<b>System specification</b>	600m of detection divided into 6 cables of 100m 1 Control Unit per system 20 sensors per 100m cable
<b>Relay outputs</b>	3

### Seal of the retailer

In order to continuously ensure the high standard of quality and performance of our products, we reserve the right to modify the present technical data without notification.

NC219-EN V1.0\_02.14



1 rue du Dauphiné - F-69120 VAULX-EN-VELIN  
Tél. : +33(0)4 78 03 06 10 Fax : +33(0)4 78 68 24 61  
e-mail : [export@sorhea.com](mailto:export@sorhea.com)

**SORHEA Inc** - 1415 South Roselle Road  
Palatine, IL 60067 -USA - (+1) 312 532 0981  
[usa@sorhea.com](mailto:usa@sorhea.com)

[www.sorhea.fr](http://www.sorhea.fr)